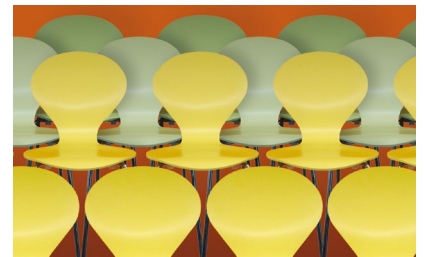
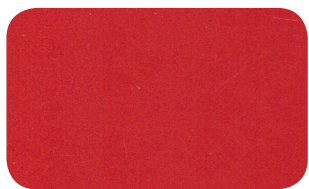




The Exclusive Plastic Finishes Range

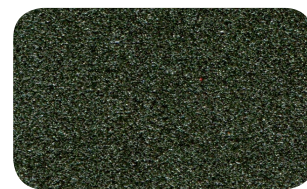




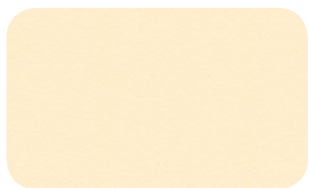
1. LE



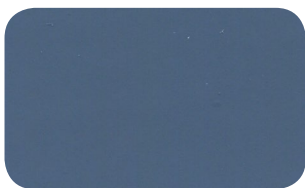
2. LE



3. EG



4. FL (interior)



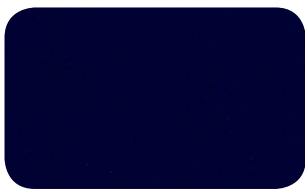
5. Soft Touch (interior)



6. Clear Coat Lacquer 1484



7. Clear Coat Lacquer 1485



8. Clear Coat Lacquer 1483



9. Clear Coat Lacquer 1495



10. Metallic 91\*



11. Metallic 92\*



12. Metallic 93\*



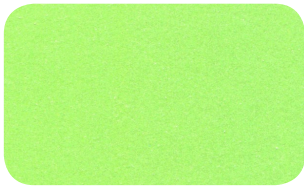
13. Metallic 91 FL\*



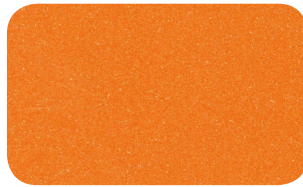
14. Metallic 92 FL\*



15. Metallic 93 FL\*



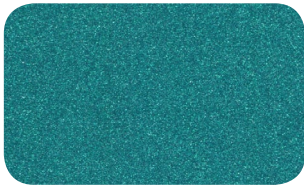
16. Metallic Colour 91\*



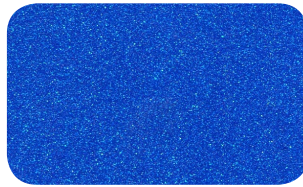
17. Metallic Colour 92\*



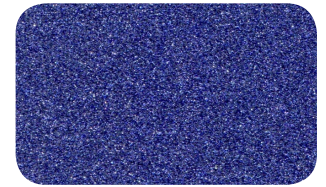
18. Metallic Colour 93\*



19. Metallic Colour 91 FL\*



20. Metallic Colour 92 FL



21. Metallic Colour 93 FL\*

The colours seen in this brochure are for demonstration purposes only. We have an extensive in-house database of over 15,000 colours available to choose from. Also available is a free in-house colour matching service, upon request. Please note that colour matches can take up to 5 working days from when we receive the sample.

***\*For external applications we recommend that metallic and pearlescent colours have a clear coat applied to increase longevity. For full recommendations on clear coat applications, please see our lightness fastness report.***

Introducing the unique AVKOTE range for the coating of exterior and interior PVCu, interior furniture and kitchens. All the finishes are available in a range of colours, using high quality pigments making it an unrivalled market leader. AVKO is the only supplier of these products in the UK.

#### How to order

1) Select your chosen finish and a colour of your choice. When ordering, please specify the type of finish/product (e.g. LE, EG, Metallic 91 etc.) along with the colour you require this in (e.g. RAL 3002). Please note that our metallic finish bases (91, 92 & 93) are silver, so this reduces the amount of colours available.

2) Some finishes shown here are achieved by applying additional products on top of the paint, such as the soft touch and clear coat lacquers. These products are ordered separately to the paint you may require.

3) If you need any help or advice with the application of any of these products please do not hesitate to contact us.

1. LE - A 2K Satin finish for PVCu and GRP
2. LE - A 2K Satin finish for PVCu and GRP
3. EG – A 2K Powder Coat finish for PVCu
4. FL – A 2K soft looking (chalky) interior coating for furniture and kitchens
5. Soft Touch – A 2K clear coat applied on top of a base colour to give a soft touch effect (interior only)
6. Clear Coat Lacquer 1484 – 15-20% Matt
7. Clear Coat Lacquer 1485 – 30% Satin
8. Clear Coat Lacquer 1483 – 50 % Medium Gloss
9. Clear Coat Lacquer 1495 – 95% High Gloss
10. Metallic 91 – Fine finish
11. Metallic 92 – Medium finish
12. Metallic 93 – Coarse finish
13. Metallic FL 91 –Bright fine finish
14. Metallic FL 92 – Bright medium finish
15. Metallic FL 93 – Bright coarse finish
16. Metallic Colour 91 – Fine finish
17. Metallic Colour 92 – Medium finish
18. Metallic Colour 93 – Coarse finish
19. Metallic FL Colour 91 – Bright fine finish
20. Metallic FL Colour 92 – Bright medium finish
21. Metallic FL Colour 93 – Bright coarse finish

For more detail on a product, technical data sheets are available upon request. In the meantime please call us on 02380 455855 or



Hamble Court  
Business Park  
Hamble Lane  
Hamble  
Hampshire  
SO31 4QJ

[www.avko.co.uk](http://www.avko.co.uk)  
023 8045 5855

