

AVKO®

The Exclusive

Sparkles
Range



Introducing the new AVKO Sparkles Range, for use on glass surfaces. This specially selected range includes an array of different coloured sparkles which can be applied as either a solid sparkle or scattered sparkle effect. The sparkle clearcoat is really quick and easy to apply onto glass using a spray gun. A backing colour can then be applied over the sparkle afterwards. Sparkles are perfect for creating a modern feature in an interior setting by applying to a glass surface in a kitchen or bathroom. This product is also ideal for office, commercial, retail and hotel spaces.

For more detail on the sparkle product, technical data sheets are available upon request. In the meantime please call us on 02380 455855 or take a look at our website www.avko.co.uk for our full range of products.

How to order.

1. Select your chosen sparkle from this brochure. The backing colour can be any colour of your choice and will need to be ordered in addition to the sparkle product. If you want to order any of the combinations shown, we have listed the backing colour alongside the sparkle (see below).
2. When ordering any of the sparkles, please quote the codes supplied inside this brochure, e.g. AVS40-01 Maroon. The sparkle colours can be ordered as two different mixes, for solid or scattered application (AVKO Silver and Rainbow Sparkle are ordered as a standard mix).
3. If you need any help or advice with the application of this product we have tutorials available. These will give you all the necessary technical information needed and a step-by-step guide for application.

AVKO Silver Sparkle

1. AVS01 Silver Sparkle & F&B 2002 White Tie
2. AVS01 Silver Sparkle & RAL 4007
3. AVS01 Silver Sparkle & RAL 9005

AVKO Rainbow Sparkle

1. AVS02 Rainbow Sparkle & F&B 2002
2. AVS02 Rainbow Sparkle & RAL 4007
3. AVS02 Rainbow Sparkle & RAL 9005

AVKO Solid Sparkle

1. AVS30-1 Bright Red & RAL 3020
2. AVS40-1 Maroon & RAL 4010
3. AVS45-1 Lavender & RAL 4005
4. AVS50-1 Turquoise & Dulux 30BG33/269
5. AVS60-1 Aqua & Dulux 50GG30/467
6. AVS65-1 Emerald Green & RAL 6029
7. AVS80-1 Cinnamon & RAL 8014
8. AVS90-1 Platinum & RAL 9022
9. AVS10-1 Champagne & RAL 1036

AVKO Scattered Sparkle

1. AVS30-2 Bright Red & RAL 7004
2. AVS40-2 Maroon & F&B 86 Stone Blue
3. AVS45-2 Lavender & RAL 5026
4. AVS50-2 Turquoise & RAL 4010
5. AVS60-2 Aqua & RAL 6004
6. AVS65-2 Emerald Green & RAL 4011
7. AVS80-2 Cinnamon & F&B 28 Dead Salmon
8. AVS90-2 Platinum & RAL 3020
9. AVS10-2 Champagne & F&B 8 String

Whilst every effort has been made to display the colour's in our sparkle brochure, as accurately as possible, we cannot guarantee that your monitor's display of these colour's will accurately reflect the colour of the paint upon delivery, as colour's may vary depending on your screen settings and resolution. You are advised to request a brochure from us to gain a more accurate colour representation before placing your order. We take no responsibility for variations in colour, as this document is for guidance purposes only.

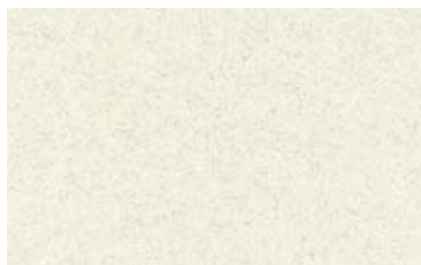


AVKO Ltd
Hamble Court Business Park
Hamble Lane
Southampton
SO31 4QJ
023 8045 5855 | www.avko.co.uk



Choose your sparkle, along with a solid backing colour of your choice. The colour combinations seen in this brochure are for demonstration purposes only.

AVKO Silver Sparkle



1. AVS01 Silver Sparkle



2. AVS01 Silver Sparkle



3. AVS01 Silver Sparkle

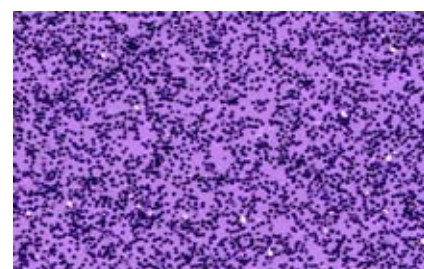
AVKO Solid Sparkle



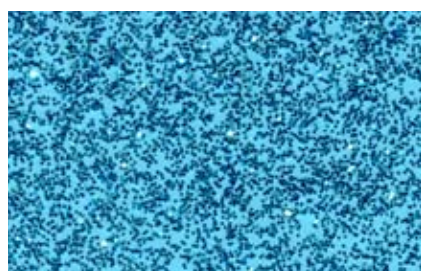
1. AVS30-1 Bright Red



2. AVS40-1 Maroon



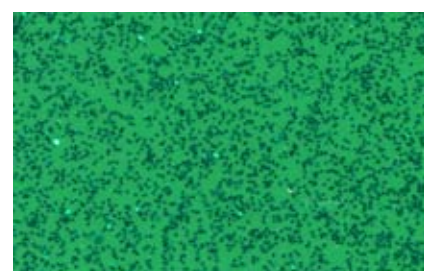
3. AVS45-1 Lavender



4. AVS50-1 Turquoise



5. AVS60-1 Aqua



6. AVS65-1 Emerald Green



7. AVS80-1 Cinnamon

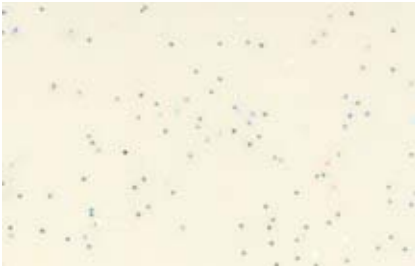


8. AVS90-1 Platinum



9. AVS10-1 Champagne

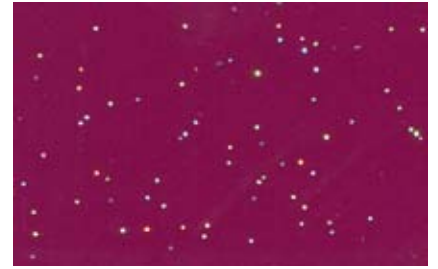
AVKO Rainbow Sparkle



1. AVS02 Rainbow Sparkle

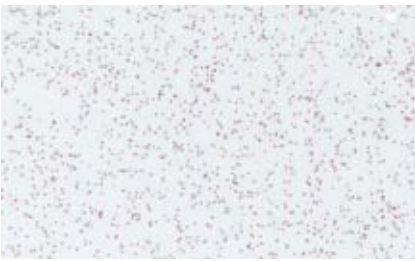


2. AVS02 Rainbow Sparkle



3. AVS02 Rainbow Sparkle

AVKO Scattered Sparkle



1. AVS30-2 Bright Red



2. AVS40-2 Maroon



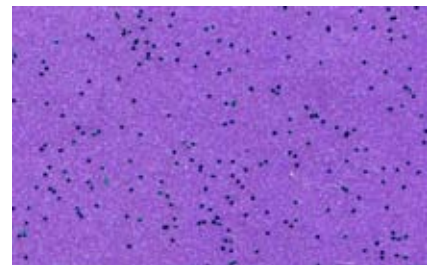
3. AVS45-2 Lavender



4. AVS50-2 Turquoise



5. AVS60-2 Aqua



6. AVS65-2 Emerald Green



7. AVS80-2 Cinnamon



8. AVS90-2 Platinum



9. AVS10-2 Champagne